



District Buzz

CLATSOP SOIL AND WATER CONSERVATION DISTRICT Clatsop County Election Information

Special points of interest:

- Find us on Facebook!
- Clatsop County Fair August 2nd to 6th
- Check out our website: clatsopswcd.org

Inside this issue:

County Elections	1
CSWCD Info and Directors	2
Elections Continued	3
Streamside Visual Assessment	4
Permission to Access Land for noxious weeds	5

The Clatsop SWCD Board of Directors is made up of citizens and landowners of Clatsop County. The county is broken into 5 zones in which there is an elected representative (director) for each zone and 2 At-large directors. The directors meet once a month to identify local conservation needs, programs and services.

On **November 8th, 2016**, the general election will be held. On the ballot will be the following positions for Clatsop Soil and Water Conservation District for the given length of term.

Positions up for Election:

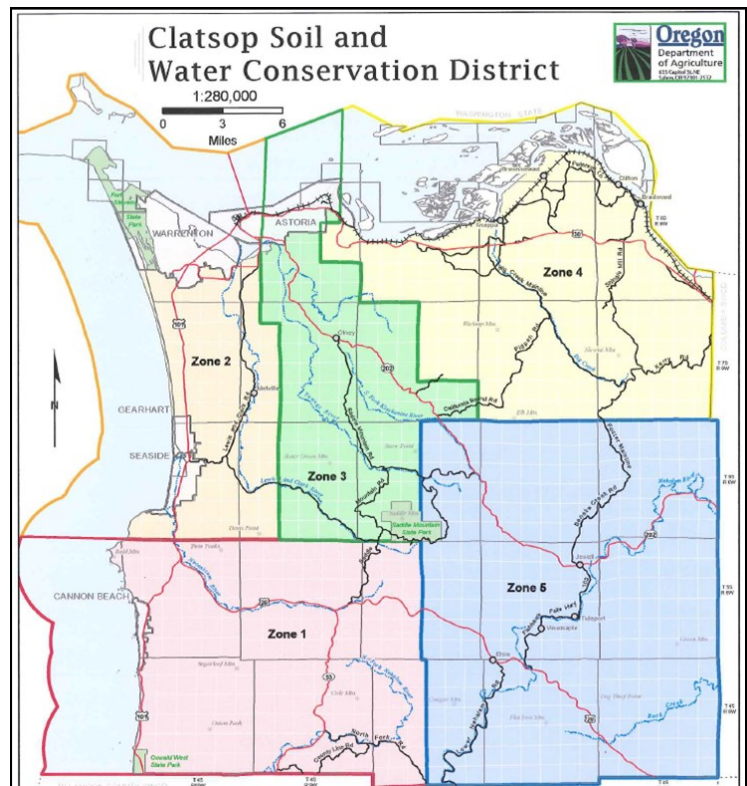
Zone 1: 2 years

Zone 3: 4 years

Zone 5: 4 years

At-large 1: 4 years

At-large 2: 2 years



Continued on next page.....

What is a Soil and Water Conservation District and what does a CSWCD Director do?

Clatsop Soil and Water Conservation District promotes wise use and conservation of Oregon's natural resources within Clatsop County. Clatsop SWCD provides local leadership, technical assistance, information, and improved access to state and federal cost-share assistance to make positive changes on your land. District programs promote voluntary adoption of land management practices by landowners that are needed to protect natural resources.

CSWCD Directors are unpaid volunteer positions that have the ability to shape the vision of the district and provide representation to their constituents in relation to natural resources, conservation and water quality issues facing the district or zone in which they represent.

CSWCD Annual
Meeting
September 25th,
2016
Call office for de-
tails
503-325-4571

- Attend and actively participate in all board meetings
- Identify local conservation needs, programs and services
- Promote the conservation district's work to local landowners, constituency, agencies and local organizations
- Promote the conservation district's work to legislators and other decision makers regarding the conservation districts funding
- Seek new partners in conservation efforts
- Work effectively with district staff, cooperating agencies and partners
- Be knowledgeable about laws that govern board operations such as budget audit, public meetings and contracting
- Participate with ODA in a periodic review of district operations
- Develop and implement long range plan and annual work plan
- Stay abreast of local conservation issues
- Maintain district's reason of focus

Want technical or financial assistance to integrate new practices into your pasture management style?

Natural Resources Conservation Service is now taking applications for their EQIP Program for 2016!!!

To find out if you qualify for federal NRCS cost-share programs contact:

Tria Yang

Clatsop County District Conservationist

Natural Resources Conservation Service

503-325-4571

tria.yang@or.usda.gov

Elections Continued....

Zone Director eligibility requirements:

- Own or manage 10 or more acres of land:

A) Reside within the zone that is represented and own or manage 10 or more acres of land; or

B) Reside within the conservation district boundaries and own or manage 10 or more acres within the zone that is being represented

OR Reside within the zone that is represented. Have served at least one year as a director or associate director of a district. Have a conservation plan approved by the district and be involved in active management of the property

- Reside within the boundary of the district
- Be a registered voter

At-Large Director requirements:

- Must reside within the boundaries of the conservation district (Clatsop County) and be a registered voter

To run for a position:

- File the original Declaration of Candidacy for Director form and the certified petition of nomination signature sheet with Oregon Department of Agriculture (ODA) no later than 5:00 pm on **August 30th, 2016.**

Election forms and information may also be found at :

- <http://www.oregon.gov/ODA/programs/NaturalResources/SWCD/Pages/Elections.aspx>
- Clatsop SWCD office: 750 Commercial St., Rm 207

Astoria, OR 97103

(503)-325-4571

Streamside Vegetation Assessment (SVA)

At the beginning of this year, using aerial photographs and a program called ArcGIS (Geographic Information System), we conducted an assessment of the riparian area surrounding the Lewis and Clark River (CSWCD’s Focus Area in 2015-2017).

This involved using geographic data layers containing mapped streams and waterways, zoned agriculture and rural lands, LIDAR and historical and recent aerial photographs. The purpose of this exercise is to allow us to better understand what type of resource concerns are found within the watershed and allow us to focus our efforts in areas that show a lack of or no vegetation. The assessment shows us how much is adequately covered by trees, shrubs, grass, bare soil, where infrastructure and dikes are as well as whether or not the vegetation is a product of agricultural activities or natural vegetation. We used a 35 foot buffer around the edge of all the waterways associated with the Lewis and Clark river to calculate a percentage of the listed attributes above. We assessed over 29 miles of waterways, including sloughs and ditches within the assessment area and classified up to 248 acres throughout the watershed into the given groups.

Clatsop SWCD
Office

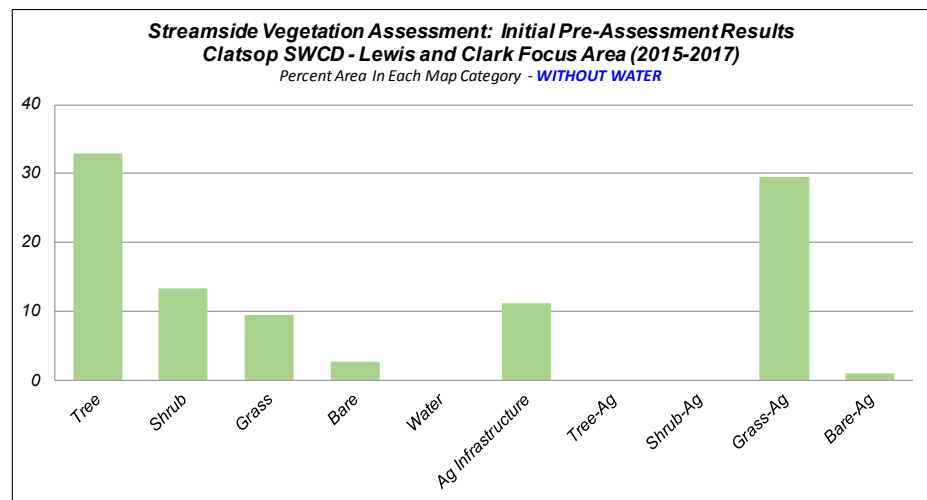
750 Commercial
Rm 207

Astoria, OR 97103

503-325-4571

What to learn more about our workshops, events and programs? Join our email list by contacting:

cswcd@clatsopswcd.org



As you can see from the graph, a majority of the area that we assessed contains either trees or agricultural grasses (pasture, hay, etc). The high number of trees shows that at least some areas are providing bank stabilization, shading and temperature regulation to the stream. The high number of agricultural grasses is probably attributed to the large number of sloughs that were assessed, often found in grazing areas behind dikes. Of course these numbers are not finalized or being used for regulatory purposes, but gives us a snap shot of what to expect and focus on when it comes to reaching out to landowners in the area.

Permission to Access Private Land

Landowner Name(s): _____

Mailing Address: _____

Property location(s): _____

Daytime telephone: _____

Are yellow flag iris, knotweed, purple loosestrife or other invasive weeds growing on the property?

Yes ___ No ___ Unsure _____

The purpose of this document is to authorize employees of the Clatsop Soil and Water Conservation District (CSWCD) or its agents to enter or cross private property to conduct restoration and noxious weed removal activities (see section 1 below) and to absolve landowners from all liabilities related to actions conducted by CSWCD.

1. This agreement is entered into to accomplish the following tasks:

- Determine if invasive weeds are present and measure their extent
- Facilitate invasive species control using selected foliar spraying of glyphosate-based herbicide (i.e. Aquanet or Aquamaster) and/or imazapyr-based herbicide (i.e. Polaris or Habitat)
- Facilitate invasive species control utilizing biological control agents (*Galerucella californiensis*, *Galerucella pusilla*, *Nanophyes marmoratus*, and *Hylobius transversovittatus*)
- Provide access to work sites across owner's land by foot or vehicle.

2. Allow project monitoring by CSWCD or its agents. The work will occur on lands owned by the landowner at the above address(es) in Clatsop County, OR..

3. Data about weed location and treatment may be included in a weed database for regional weed mapping and scientific analysis. However, landowner name and address will be kept separate and confidential so it is not associated with weed data.

4. CSWCD and its agents agree to hold landowners harmless for all claims, suits, or actions of whatsoever nature resulting from this cooperative agreement.

5. Permission is granted for 3 years or until formally revoked, either orally or in writing.

This agreement shall be effective upon signature of all parties listed below.

Name of cooperating landowner

Signature of landowner

Date

Name of CSWCD representative

Signature of CSWCD rep.

Date



CLATSOP SOIL
AND WATER
CONSERVATION
DISTRICT

750 Commercial Street Room 207
Astoria, Oregon 97103

Phone: 503-325-4571
Email: cswcd@clatsopswcd.org
Website: clatsopswcd.org

Clatsop SWCD Board of Directors:

At-Large Director and Chairman: Mike Seppa

Zone 1 Director: vacant

Zone 2 Director and Treasurer: Katherine Kahl

Zone 3 Director: Ted Warila

Zone 4 Director: Cary Johnson

Zone 5 Director: Wayne Carmichael

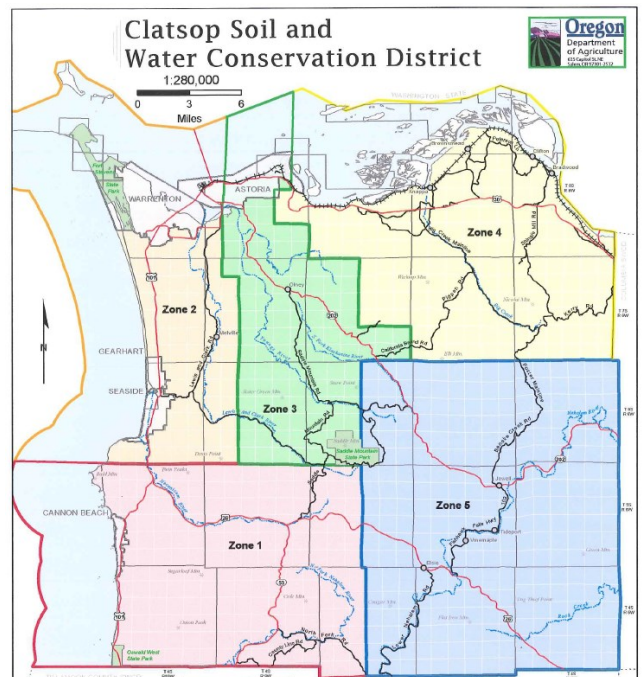
At-Large Director: Von Whitney

District Staff:

District Technician/Project Manager: Austin Tomlinson

District Manager: Misty Ogier

Noxious Weed Specialist: Lee Wunder



Clatsop SWCD is a non-regulatory, local entity with the mission to serve the residents of Clatsop County. We work with landowners to achieve their land management goals and act as a community resource for water quality, agriculture, and forestry consultation, resource utilization and conservation planning services, and project funding programs. It is our aim to orchestrate projects that will enable landowners to utilize their natural resources while improving water quality, conserving soil integrity and promoting animal health. Results of SWCD work include cleaner water, conservation of natural resources, and increased production of crops, pastures, and forests.

The Clatsop SWCD is an equal opportunity employer, providing services to the public without regard to race, color, national origin, gender, religion, age, disability, political beliefs, sexual orientation, and marital or family status.